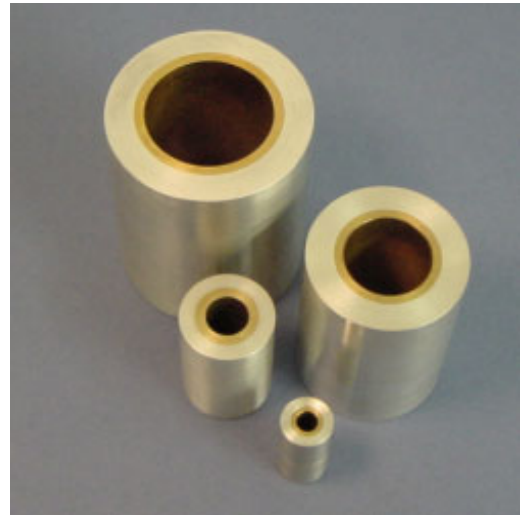
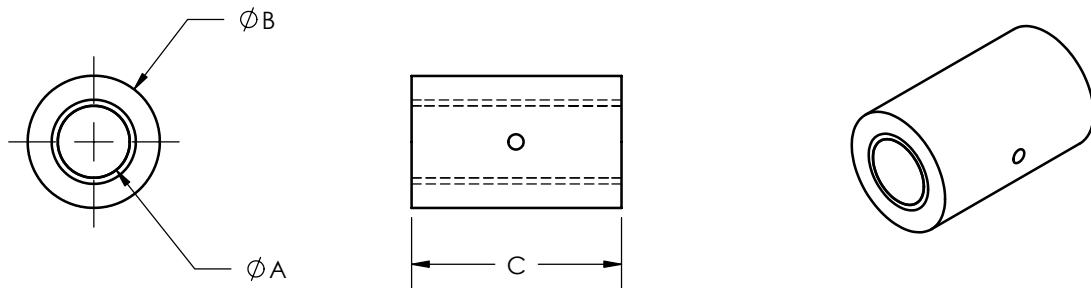


# NELSON AIR

559 Route 13 South, PO Box 2  
 Milford, NH 03055  
 (603) 673-3908 Fax:(603) 672-3008  
 e-mail: info@nelsonair.com  
 www.nelsonair.com



## Standard Rod Air Bearings



Model	A	B -0.002 B-0.000	C	D	Shaft Size
LB-2	1/4"	0.625	1.18	0.31	0.2497
LB-3	3/8"	1.000	1.18	0.44	0.3750
LB-5	1/2"	1.125	1.68	0.87	0.5000
LB-7	3/4"	1.375	2.18	1.50	0.7500
LB-10	1"	1.875	2.43	2.50	1.0000
LB-15	1-1/2"	2.437	2.93	4.50	1.5000

D = Projected Area  
 .1 X PSIG X D = Approx. Load Limit LB-2 to LB-5  
 .2 X PSIG X D = Approx. Load Limit LB-7 to LB-15  
 .0015 - .0002 Diametral Shaft Clearance

All dimensions in inches. Air inlets are tapped 10-32.  
 A barbed fitting for 1/8" ID tygon tubing is supplied unless otherwise specified.  
 Bearings require approx. 30-40 psi - regulator - 10 micron filter.

### Accessories:

- Motors, encoders, and controllers customized for your application can be supplied.

Nelson Air prides itself on providing high quality positioning solutions for its customers.  
 Please call us for more information.